

# ASSASSIN INSTALL AND INSPECTION

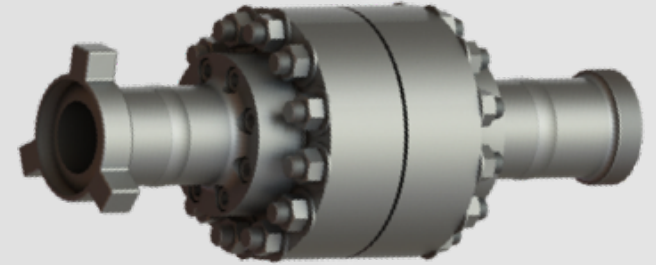
## Insure all fasteners are tightened to specified torque

10K Assassin Assembly = 1000 LB-FT or as needed to seal - not over 2050 LB-FT

10K Spool Capscrews = 450 LB-FT or as needed to seal – not over 500 LB-FT

15K Assassin Assembly = 1200 LB-FT or as needed to seal – not over 2600 LB-FT

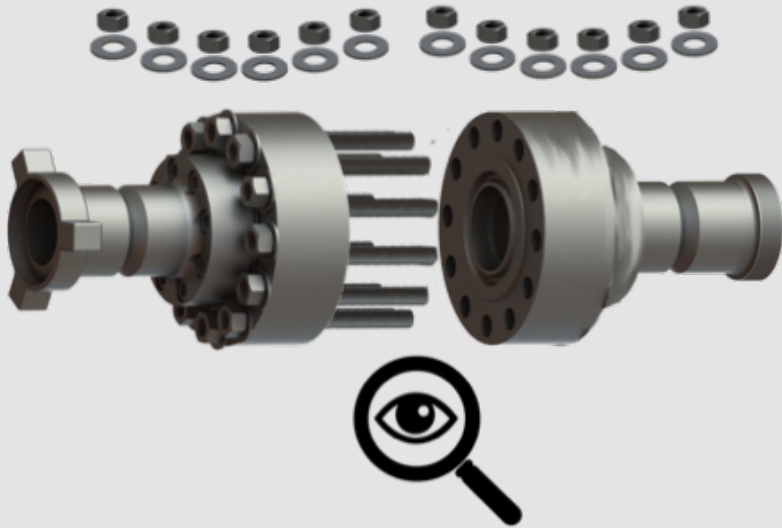
15K Spool Capscrews = 650 LB-FT or as needed to seal – not over 750 LB-FT



## Install Assassin w/ spools at pre-determined location

Drilling application is directly after the pump loop going to the production line

Well Service applications have numerous locations – *please consult Sigma if unsure of application location*



## Periodical Inspection

On a bi-yearly basis, the Assassin's internals need to be inspected. (If pumped media is particularly granular, you may need to accelerate the inspection timeframe)

Make sure system pressure is at zero

Disconnect the spools from the production line

Break the nuts on the Assassin assembly and pull the assembly apart

Pull the baffling out of the assembly and visually inspect (If the baffling is showing signs of wear, we suggest replacement for maximizing performance)

Visually inspect the chamber of the Assassin

The internals will show erosion depending on the viscosity and granularity of the pumped media

*If you have any questions regarding the amount of erosion, please contact Sigma for go/no go measurements*

## Reassembly and Reinstall

Replace baffling in Assassin, reassemble the Assassin assembly and apply specified torque

Reinstall in production line

**ENJOY THE BENEFITS**

